






 **VEHICLE DESCRIPTION - Škoda Kodiaq Style 2.0 TDI**



First registration date 3/2023	VIN: TMBJJ9NS8P8509006
Colour: Black Metallic Normal gloss	Mileage (km): 64.722
Gear: Automatic (7 Gears)	Fuel type: Diesel
Body type: SUV	Number of doors: 5
Drive type: FWD	Model year: 2021-2024
Engine power: 110 kW	Number of seats: 7
Engine size (cc) 1968	Interior:

 VEHICLE DETAILS			
Number of keys: 2	Number of license plates: 2	Registration certificate: Part 1 & 2 present	Service documentation: Yes
Inspection date: 23-12-2025	Last service (year/month): 2025/12	Mileage (km) at last service: 62.981	

 SUMMARY OF THE VEHICLE'S CONDITION	
Is the car in a driveable condition: Yes	Legal tire tread (minimum 1.6 mm): Yes

WHEELS

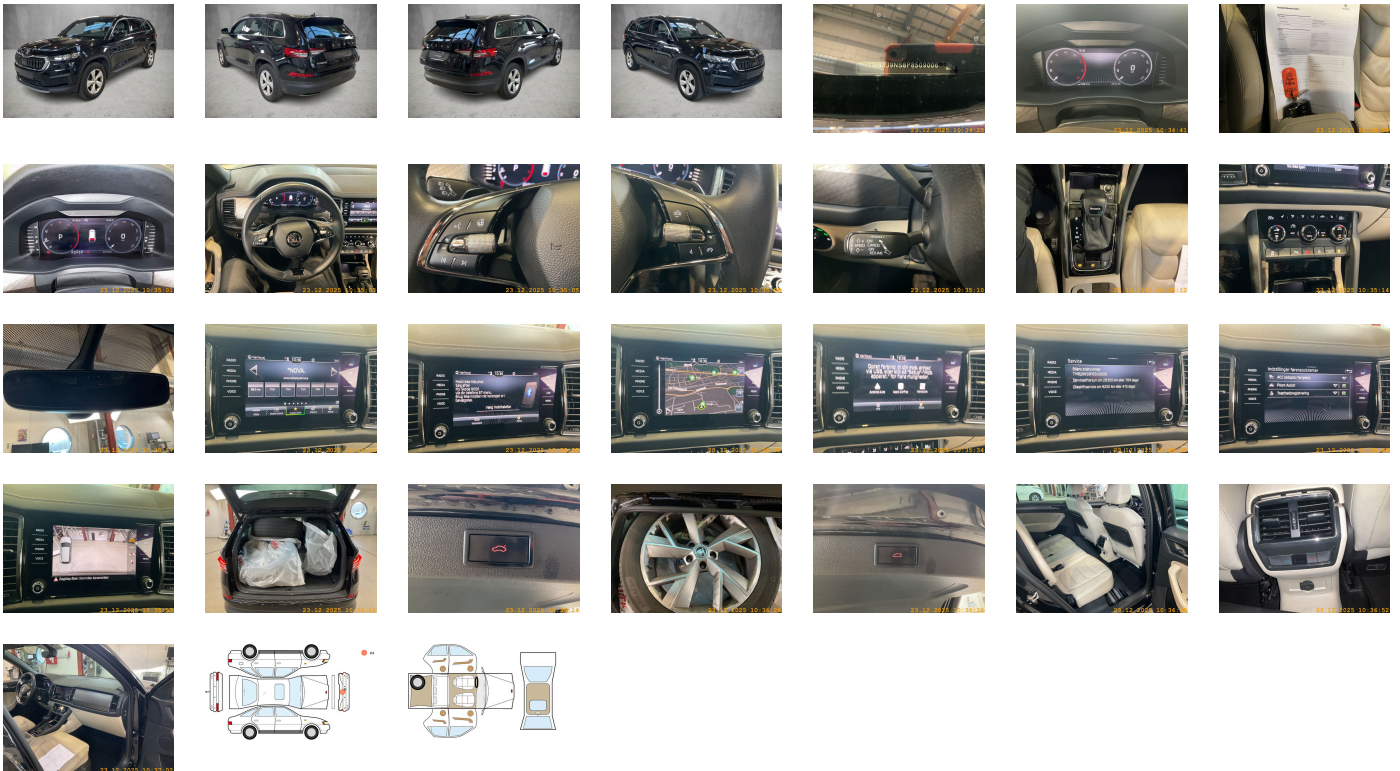
 TYPE	SEASON	BRAND	POSITION	RIM	SIZE	TREAD
Fitted	Winter tires		Rear Left	Alloy rim	17"	5 mm
Fitted	Winter tires		Front Right	Alloy rim	17"	5 mm
Fitted	Winter tires		Front Left	Alloy rim	17"	5 mm
Fitted	Winter tires		Rear Right	Alloy rim	17"	5 mm
Extra Wheel	Summer tires		Rear Left	Alloy rim	19"	2 mm
Extra Wheel	Summer tires		Front Right	Alloy rim	19"	2 mm
Extra Wheel	Summer tires		Front Left	Alloy rim	19"	2 mm
Extra Wheel	Summer tires		Rear Right	Alloy rim	19"	2 mm

Legal tire tread (minimum 1.6 mm):
Yes

ACCESSORIES



Driving on the right, Sports equipment, Part set without country-specific prescriptive standard, Type approval country Denmark, Operating permit- alteration, 4-cyl. turbo diesel 2.0l/110kW(4V) TDI CR, b.eng. T37/T3Y/TS1/T4P/T98/T4S/TR1 T0N/T13/T29/TD1/TI9/T3C/T1N/T27/T1Q/T5M, Without ECO function, Remote Access / Remote Access + Online Infotainment, Driver alert system, Regional code " ECE " for radio, No special edition, Standard paint coating, Control of series production (deviating in-plant control), Variant, No special purpose vehicle- standard equipment, Without electronic engine sound measures, Shock absorption in front, 7-speed automatic transmission, Tires 235/50 R19 99V, Without bracket, Curb weight range 1, Rear axle weight- type 1, Battery 420 A (70 Ah), With rear view camera system (type 2), Climatronic (3-zone) with air conditioning control panel in rear, Refrigerant R1234yf, Without head-up display, Hatchback, Left-hand drive, Suspension range 05 installation control only- no requirement forecast, Without adapter, Standard battery/alternator capacity, Emergency call system eCall+, Seat trim covers in leather, Curtain airbags and side airbags front and rear, Upholstery - leather, 3rd seat row with middle arm rest in the 2nd row- variable boot floor- seat belt reminder- el. contact in buckle, LongLife Service Regime, Voice control, Service indicator 30 000 km or 2 years (variable), Chrome package, Without multifunction camera, Drawers under front seats, Interior ambient lighting- type 1, Without dynamic road sign display, DAB - Digital radio reception, Comfort seats in front, Navigation system "AMUNDSEN" with voice control + WLAN + "SMART LINK" (wireless for Apple) + web radio, 4-cylinder diesel engine 2.0 l unit 05L.D, Hill start assist, Parking brake, Mechanical rear seat release, Alloy wheels 7J x 19 "TRIGLAV", Instrument cluster- km/h speedometer, USB front, Standard pedal cluster, Extended and proactive pedestrian protection, Tires without specification of tire brand, Remote Access + Infotainment Online 1 year, Front stabilizer bar, Rear stabilizer bar, Wheelbase, Standard manufacturing sequence, Fuel system for diesel engine, Installation differentiation for transmission DQ381 -- vehicle components --, Without decals and emblems, Without alternative drive system, Vehicle class differentiation -55A-, Nameplate set in basic style, With electronic steering column lock, Floor mats in front and rear, Manual in Danish, Weight range 13 installation control only- no requirement forecast, Standard climatic zones, Electronic stability control (ESC), Special identification label for EC for M1 passenger vehicles, Without activated carbon canister with SCR, Breakdown kit, Rear shock absorption- basic version 1, Disc brakes in front, Trailer hitch preparation, Trims for alloy wheels, Speed-related variable steering assist (Servotronic), Standard wheel bolts, Without additional front underbody guard, Tool kit, Folding table on front seat backrests, Front-wheel drive, Initial standard fuel filling, Without delivery equipment, Additional exterior noise suppression, Disc brakes in rear, Leather-wrapped multi-function steering wheel- heated- with tiptronic, Without locking and starting systems, Without "drive select", Standard bumpers, Without additional tires, Fuel filler cap, Child seat anchors for child seat system ISOFIX, Without partition, 3-point seat belt for center rear seat, Without roof insert (standard roof), Raised luggage/load compartment floor in rear, Without child seat anchor in front (ISOFIX), Without backrest release for front seats, Rear seat bench/backrest- split folding with center armrest and 2 seats in 3rd row of seats, Manual height adjustment for front seats, Storage compartments in trunk, 3-point seat belts in front- with tensioner and height adjustment, Bright roof rails, Three rear head restraints, Luggage compartment cover-sliding, Special interior noise suppression, Without load-through hatch, Without roll-up sunshade, 3-point seat belts- outer rear with ECE label, Without trash bin, Door and side trim panel, Seat heater for front seats separately controlled, Emission standard EU6 AP, Without protective side molding, Without seat ventilation/massage seat, Tailgate/trunk lid power closing, Heat-reflecting windshield, Manual child safety lock, Central locking system Keyless Entry without SAFELock, "SUNSET", Breakaway interior rearview mirror- auto-dimming, Driver knee airbag, Luggage pockets on backrest, Side airbag in front and rear with curtain airbag, Bright decorative trims, Without special body measures, Carrier frequency 433.92 MHz-434.42 Mhz, Roof spoiler, Transport protection film with additional transport protection measures, Decorative inserts, Right exterior mirror- convex, Left exterior mirror- convex, Sun visors with mirror- illuminated, Front head restraints, Without fire extinguisher, Center armrest in front, Exterior mirror housings and various add-on parts in body color, Without lane keeping system, Forward collision warning incl. autonomous emergency braking- for adaptive cruise control "high", Without tie down straps/net/pocket, Unsplit molded headliner, Without mud flap, Gearshift knob/handle in leather, Luggage compartment floor covering in needle-punched nonwoven, Interior light in footwell in front and rear, Exterior mirrors- auto-dimming- power-folding/adjustable/heated, Electronic immobilizer, 12-volt socket(s), Electric auxiliary air heater, Tire pressure monitoring system, Start-stop system with regenerative braking, Scuff plates in door apertures, Overhead storage compartment, Manually adjustable lumbar support in front seats, Navi Amundsen + Web radio, Without extended safety system, Park distance control in front and rear, Without lane change assist, Optional infotainment system (MIB3), Without second battery, Alternator 140 A, High-beam control, LED headlamps, Separate daytime running light with automatic headlight control and manual Coming and Leaving Home feature, Windshield wiper intermittent control with light/rain sensor, Key for locking system with remote control, Headlight range control, 8 speakers (passive), 2 reading lights in front, Rear fog lamp, Adaptive cruise control (with "follow-to-stop") and speed limiter, LED rear combination lamp- variable lighting functions- special styling, Front fog lamps, Washer fluid level indicator, Headlamp washer system, Two-tone horn, Antenna for FM reception only- diversity, Not hot country, Luggage compartment lamp, Without additional malfunction display, Comfort telephony with LTE and wireless charging, Non-smoker's package, Without auxiliary heater/parking heater, Seat belt reminder- electric contact in buckle, Virtual Cockpit, Additional retro-reflectors (door area), Heated washer nozzles in front, "SMART LINK" (wireless for Apple), Operating voltage 12 V, Equipment options subset for Denmark

PICTURES



Picture viewer: <https://fm.bilsalg.dk/business/picturebrowser?t=full&guid=d85f4e13-ad59-4052-9beb-35681bd11295&carid=19939663>

OVERVIEW OF DAMAGES AND SHORTAGES

N°	LOCATION	TYPE	SEVERITY	INSURANCE	NOTES	DAMAGE GROUP
1	Front Bumper	Scratch	C4	Reporting needed		
						

Severity explanation:
C0 = No damage / C1 = Simple preparation / C2 = Minor preparation needed / C3 = Can be smart repaired / C4 = Repair/spray paint / C5 = Need replacement

ELECTRICAL AND MECHANICAL CONDITION

N°	LOCATION	TYPE	NOTES
1	Is the car drivable	Yes	