

**VEHICLE DESCRIPTION - Škoda Superb Business Executive 2.0 TSI**



<b>First registration date:</b> 2/2023	<b>VIN:</b> TMBJM9NP0P7009401
<b>Colour:</b> Black Metallic Normal gloss	<b>Mileage (km):</b> 62.675
<b>Gear:</b> Automatic (7 Gears)	<b>Fuel type:</b> Gasoline
<b>Body type:</b> Estate Wagon	<b>Number of doors:</b> 5
<b>Drive type:</b> FWD	<b>Model year:</b> 2019-2024
<b>Engine power:</b> 140 kW	<b>Number of seats:</b> 5
<b>Engine size (cc):</b> 1984	<b>Interior:</b> Dark grey Leatherette

**VEHICLE DETAILS**

<b>Number of keys:</b> 2	<b>Number of license plates:</b> 2	<b>Registration certificate:</b> Part 1 & 2 present	<b>Service documentation:</b> No
<b>Inspection date:</b> 04-03-2026	<b>Last service (year/month):</b>	<b>Mileage (km) at last service:</b>	

**SUMMARY OF THE VEHICLE'S CONDITION**

<b>Is the car in a driveable condition:</b> Yes	<b>Legal tire tread (minimum 1.6 mm):</b> Yes
--	--

## WHEELS

 TYPE	SEASON	BRAND	POSITION	RIM	SIZE	TREAD
Fitted	Summer tires		Front Left	Alloy rim	17"	5 mm
Fitted	Summer tires		Rear Right	Alloy rim	17"	5 mm
Fitted	Summer tires		Rear Left	Alloy rim	17"	5 mm
Fitted	Summer tires		Front Right	Alloy rim	17"	5 mm

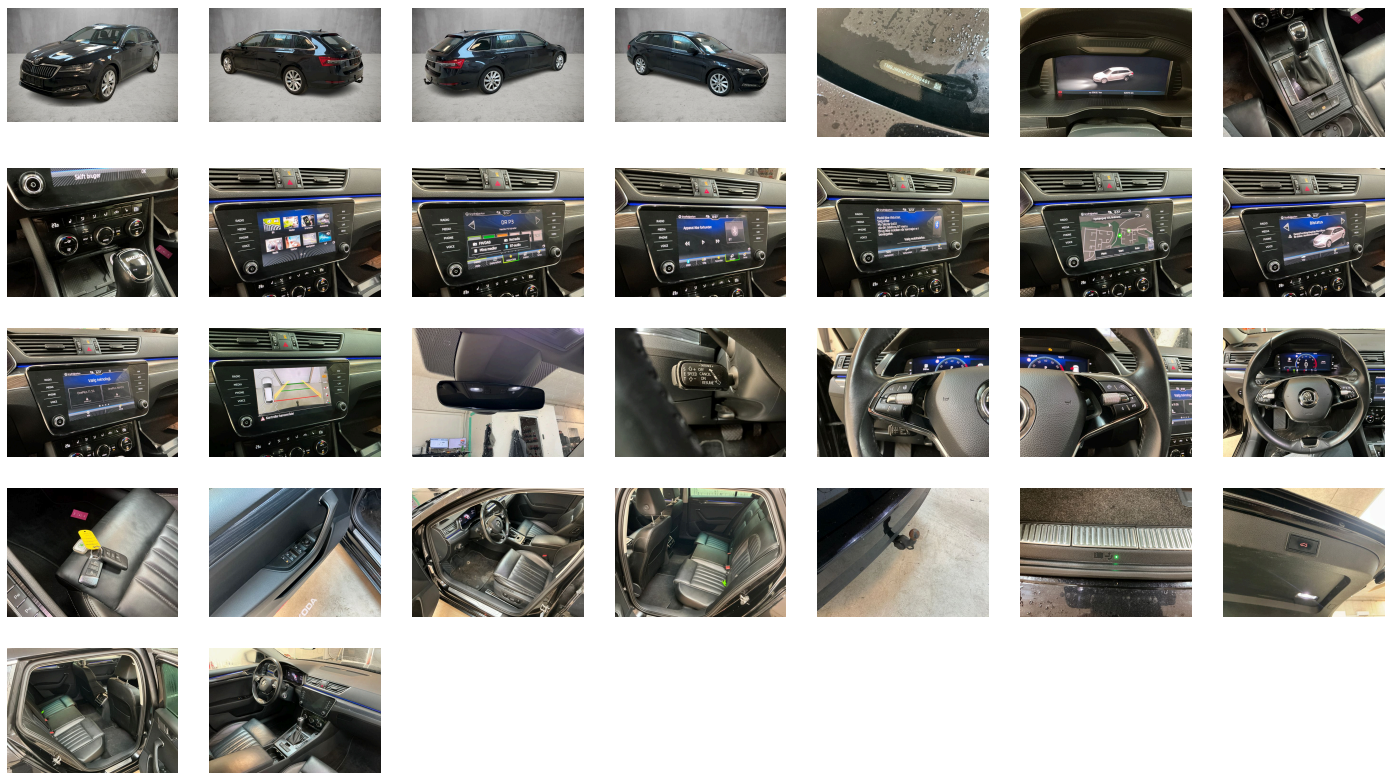
### Legal tire tread (minimum 1.6 mm):

Yes

## ACCESSORIES

Driving on the right, Equipment level - Style, Part set without country-specific prescriptive standard, Type approval country Denmark, Alloy wheels "STRATOS" 7Jx17", Operating permit- alteration, 4-cylinder SI engine 2.0 l/140 kW TFSI- homogen.- base engine is T06/T2C/T2/ T2W/T3I/T4U/T50/T5H/T6E/T8J/TD3/T5V/T3Q, Without ECO function, Remote Access / Remote Access + Online Infotainment, "DRIVER ALERT" - driver alert system, Regional code " ECE " for radio, Without vehicle inlet, Without charging cable, No special edition, Standard paint coating, Basic equipment variant, No special purpose vehicle- standard equipment, Standard electronic engine sound, Vehicles with special upgrade measures, Shock absorption in front, 7-speed automatic transmission, Tires 215/55 R17 94W, Without bracket, Curb weight range 1, Battery 420 A (70 Ah), "REAR VIEW CAMERA MID", Climatronic (3-zone) with air conditioning control panel in rear, Refrigerant R1234yf, Without head-up display, Wagon/Avant, Left-hand drive, Suspension range 18 installation control only- no requirement forecast, Without adapter, Standard battery/alternator capacity, Emergency call system eCall+, Seat trim covers in leather, Curtain airbags and side airbags front and rear, Sports suspension, Virtual pedal, Without child seat, LongLife Service Regime, Voice control, Service indicator 30 000 km or 2 years ( variable ), Chrome package (type 2), With multifunction camera, Interior ambient lighting- type 2, With dynamic road sign display, DAB - Digital radio reception, Comfort seats in front, 230V socket with 2x USB rear, 4-cylinder SI engine 2.0 l unit 06Q.A 888evo4, Hill hold control, Parking brake, Standard rear seat release, Without clock, Instrument cluster- km/h speedometer, 2x USB front + 2x USB rear, Without garage door opener, Standard pedal cluster, Extended and proactive pedestrian protection, Tires without specification of tire brand, Prestige package, Remote Access + Infotainment Online 1 year, Semiconductors, Wheelbase, Standard manufacturing sequence, Installation differentiation for transmission DQ381 -- vehicle components --, Without alternative drive system, Fuel tank, Nameplate set in basic style, Rear exhaust tailpipe (standard), With electronic steering column lock, Textile floor mats, Manual in Danish, Weight range 4 installation control only- no requirement forecast, Standard climatic zones, Brake control system for vehicles without electric drive (ESC and electromechanical brake booster), Fuel system for fuel-injected SI engine, Tow bar- swiveling, Special identification label for EC for M1 passenger vehicles, Activated carbon canister (Evaporative Emission Control System (EVAP)), Breakdown kit, Rear shock absorption- sports version, Trims for alloy wheels, Speed-related variable steering assist (Servotronic), Standard wheel bolts, Mass damper for steering wheel- XX Hz, Without additional front underbody guard, Tool kit, Front-wheel drive, Disc brakes in front, Initial standard fuel filling, Without delivery equipment, Disc brakes in rear, 2 spoke multifunction leather steering wheel- heated + with DSG shifting- blackstitching, Without locking and starting systems, Without "drive select", Body-colored bumpers, Without additional tires, Without electric motor (hybrid), Child seat anchors for child seat system ISOFIX, Without partition, 3-point seat belt for center rear seat, Center console, Without roof insert (standard roof), Variable boot floor incl. fastening eyes + organizer, Preparation for child seats anchor with safety system "ISOFIX" on passenger seat, Without backrest release for front seats, Door and side trim panel in foam film and woven fabric, Power seats in front- driver seat with memory feature, Unsplit rear seat bench- split folding backrest- with center armrest, Storage box with cover in luggage compartment side panel (covers on both sides) plus cargoelement, 3-point seat belts in front- with tensioner and height adjustment, Roof rails- anodised, Three rear head restraints, Automatical unlocking roller blind with multifunction pocket, Acoustics package "Standard", Without load-through hatch, Without roll-up sunshade, 3-point seat belts- outer rear with ECE label, Heated front seats, Emission standard EU6 AP, Without seat ventilation/massage seat, "KESSY FULL" without "SAFE" system, Virtual pedal-Opening/Closing of 5th doors(only in combination with el. trunklid and Kessy), Heat-reflecting windshield, Power-operated child safety lock, "SUNSET", Breakaway interior rearview mirror- auto-dimming, Driver knee airbag, Front passenger seat control, Side airbag in front and rear with curtain airbag, Chrom trimming around side windows, Without special body measures, Carrier frequency 433.92 MHz-434.42 Mhz, Roof spoiler, Transport protection film with additional transport protection measures, Right exterior mirror-convex, Left exterior mirror- convex, Decor moulding Argenzo Zebrano with chrom and ambient lighting, Sun visor with make-up mirror and LED illumination and airbagschield, Front head restraints, Without fire extinguisher, Center armrest in front, Exterior mirror housings and various add-on parts in body color, Lane Assist with adaptive lane guidance function + Emergency Assist, Radiator grille with chrome molding, Forward collision warning incl. autonomous emergency braking- for adaptive cruise control "high", Without tie down straps/net/pocket, Unsplit molded headliner, Without mud flap, Gearshift knob/handle in leather, Interior light in footwell in front and rear, Ext. mirrors with memory feature- auto- dimming on driver's side- el.folding/ adjustable- separately heated, Electronic immobilizer, 12-volt socket(s), Without heat accumulator/auxiliary heater, Tire pressure monitoring system, Start-stop system with regenerative braking, Decorative door sills front and rear, Power-adjustable lumbar support in frontseats, Without CD/DVD for navigation, Navi Amundsen + Web radio, Standard engine starter, "CREW PROTECT ASSIST" - with extended safety system(Pre-Crash Basic and Front), "PARK ASSIST with MANOEUVRE ASSIST" with aut. braking, Side Assist, Vehicle class differentiation -3V0-, Optional infotainment system (MIB3), Without second battery, Alternator 140 A, Matrix beam, Full LED TOP headlamps with Matrix Beam function incl. Welcome Effect, "LIGHT ASSISTANT" ("COMMING HOME"- "LEAVING HOME"- "TUNNEL LIGHT"- "DAY LIGHT"), Rear window wiper "AERO", Windshield wiper intermittent control with light/rain sensor, Key for locking system with remote control, Dynamic headlight range control- with cornering light (AFS 1), 8 speakers (passive), Rear fog lamp, Adaptive cruise control (with "follow-to-stop") and speed limiter, TOP LED taillights, Front fog lamp and cornering lamp, Telescopic headlamps washers, Two-tone horn, Antenna for FM reception only- diversity, Not hot country, Without preparation for two-way radio installation, Without additional malfunction display, Comfort telephony with LTE and wireless charging, Non-smoker's package, Without auxiliary heater/parking heater, Passenger seat-belt warning light (for all passenger), "Virtual Cockpit", Additional warning lights (door area), Heated windscreen washer nozzles, "SMART LINK" (wireless for Apple), 230-V inverter and outlet for Europe, Equipment options subset for Denmark

**PICTURES**



**Picture viewer:** <https://fm.bilsalg.dk/business/picturebrowser?t=full&guid=0efac7d2-b308-4a0e-bd46-e69c9a85d57c&carid=19933868>

## OVERVIEW OF DAMAGES AND SHORTAGES

N°	LOCATION	TYPE	SEVERITY	INSURANCE	NOTES	DAMAGE GROUP
1	Curtain Luggage Compartment	Missing	C5		Reporting needed	



Severity explanation:

C0 = No damage / C1 = Simple preparation / C2 = Minor preparation needed / C3 = Can be smart repaired / C4 = Repair/spray paint / C5 = Need replacement

## ELECTRICAL AND MECHANICAL CONDITION

N°	LOCATION	TYPE	NOTES
1	Is the car drivable	Yes	