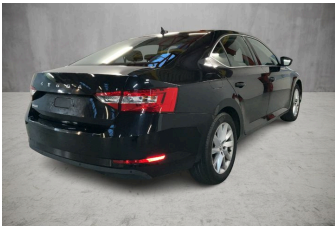
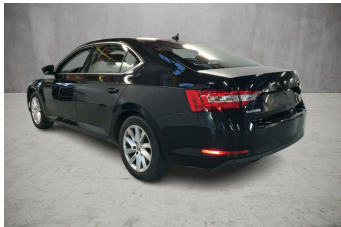


 VEHICLE DESCRIPTION - Škoda Superb Style 1.5 TSI ACT



First registration date	VIN:
2/2023	TMBAN7NP1P7033613
Colour:	Mileage (km):
Black Metallic Normal gloss	42.412
Gear:	Fuel type:
Automatic (7 Gears)	Gasoline
Body type:	Number of doors:
Hatchback	5
Drive type:	Model year:
FWD	2019-2024
Engine power:	Number of seats:
110 kW	5
Engine size (cc)	Interior:
1498	Grey Fabric

 VEHICLE DETAILS

Number of keys:	Number of license plates:	Registration certificate:	Service documentation:
2	2	Part 1 & 2 present	Yes
Inspection date:	Last service (year/month):	Mileage (km) at last service:	
22-12-2025	2024/7	29.413	

 SUMMARY OF THE VEHICLE'S CONDITION

Is the car in a driveable condition:	Legal tire tread (minimum 1.6 mm):
Yes	Yes

WHEELS

 TYPE	SEASON	BRAND	POSITION	RIM	SIZE	TREAD
Fitted	Summer tires		Front Left	Alloy rim	17"	5 mm
Fitted	Summer tires		Rear Right	Alloy rim	17"	5 mm
Fitted	Summer tires		Rear Left	Alloy rim	17"	5 mm
Fitted	Summer tires		Front Right	Alloy rim	17"	5 mm

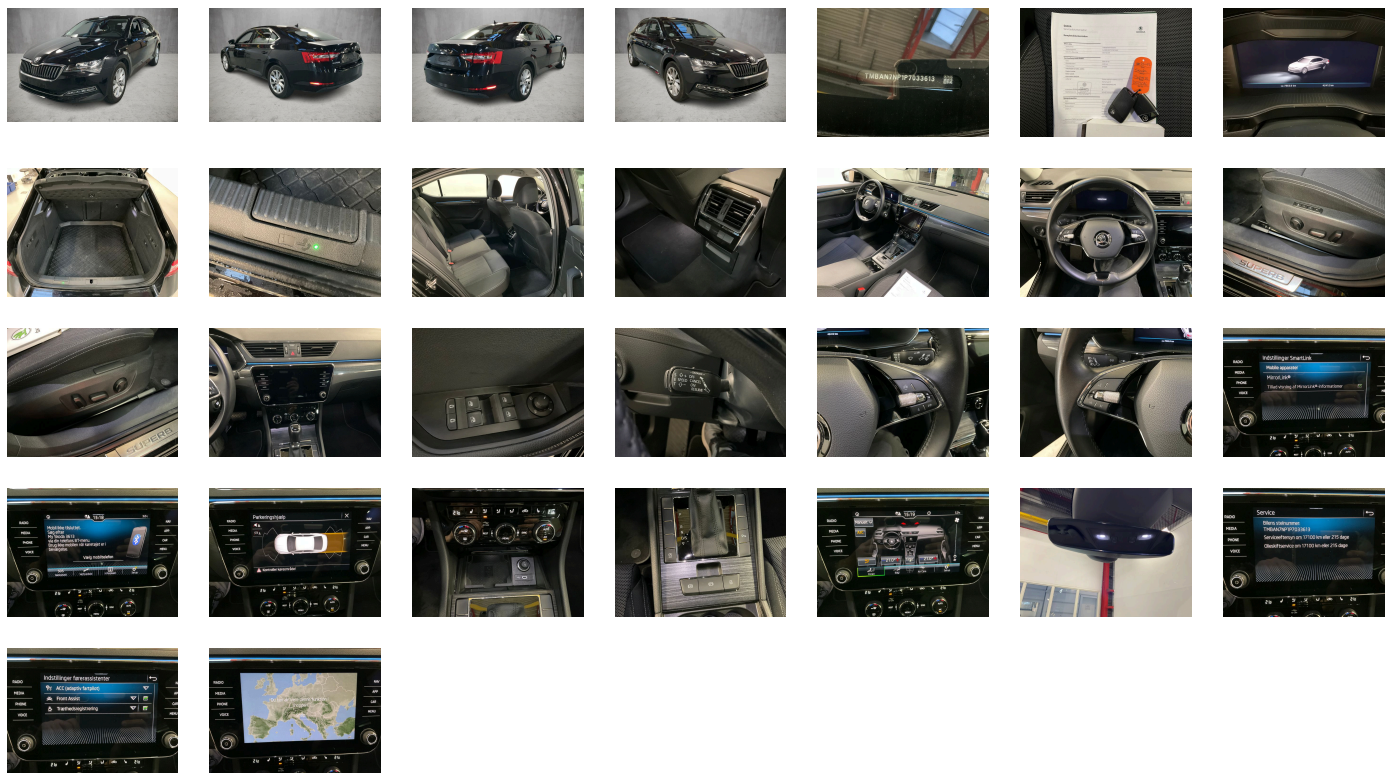
Legal tire tread (minimum 1.6 mm):

Yes

ACCESSORIES





Driving on the right, Equipment level - Style, Part set without country-specific prescriptive standard, Type approval country Denmark, Alloy wheels "STRATOS" 7Jx17", Operating permit- alteration, 4-cylinder SI engine 1.5 l/110 kW TSI base engine is TJ7/N09/T9F/T57/T0D, Without ECO function, Remote Access / Remote Access + Online Infotainment, "DRIVER ALERT" - driver alert system, Regional code " ECE " for radio, Without vehicle inlet, Without charging cable, No special edition, Standard paint coating, Basic equipment variant, No special purpose vehicle- standard equipment, Standard electronic engine sound, Vehicles with special upgrade measures, Shock absorption in front, 7-speed automatic transmission, Without bracket, Curb weight range 1, Battery 420 A (70 Ah), Tires 215/55 R17 94V super-low rolling resistance- generation 2 (polymer coating), Without camera systems/accident sensors, Climatronic (3-zone) with air conditioning control panel in rear, Refrigerant R1234yf, Without head-up display, Notchback, Left-hand drive, Suspension range 05 installation control only- no requirement forecast, Without adapter, Standard battery/alternator capacity, Emergency call system eCall+, Seat trim covers in fabric, Tow bar- swiveling, "FRONT ASSIST" - adaptive cruise controlto 210km/hour, Without child seat, LongLife Service Regime, Voice control, Service indicator 30 000 km or 2 years (variable), Chrome package (type 2), With multifunction camera, Interior ambient lighting- type 2, Without compass/road sign display/ dynamic road sign display, DAB - Digital radio reception, Comfort seats in front, 4-cylinder SI engine 1.5 l unit 05E.A, Hill hold control, Parking brake, Standard rear seat release, Without clock, Instrument cluster- km/h speedometer, 2x USB front, Without garage door opener, Standard pedal cluster, Extended and proactive pedestrian protection, Tires without specification of tire brand, Remote Access 1 year, Wheelbase, Installation differentiation for transmission DQ200 -- vehicle components --, Standard manufacturing sequence, Without alternative drive system, Fuel tank, Nameplate set in basic style, Rear exhaust tailpipe (standard), With electronic steering column lock, Textile floor mats, Manual in Danish, Weight range 3 installation control only- no requirement forecast, Standard climatic zones, Brake control system for vehicles without electric drive (ESC and electromechanical brake booster), Fuel system for fuel-injected SI engine, Tow bar- swiveling, Special identification label for EC for M1 passenger vehicles, Activated carbon canister (Evaporative Emission Control System (EVAP)), Breakdown kit, Rear shock absorption- basic version 1, Trims for alloy wheels, Speed-related variable steering assist (Servotronic), Standard wheel bolts, Without mass damper for steering wheel, Without additional front underbody guard, Tool kit, Front-wheel drive, Disc brakes in front, Initial standard fuel filling, Without delivery equipment, Disc brakes in rear, Without locking and starting systems, Without "drive select", Body-colored bumpers, Without additional tires, 2 spoke multifunction leather steering wheel- black stitching, Without electric motor (hybrid), Child seat anchors for child seat system ISOFIX, Without partition, 3-point seat belt for center rear seat, Center console, Without roof insert (standard roof), Without luggage/load compartment floor, Without child seat anchora in front (ISOFIX), Without backrest release for front seats, Door and side trim panel in foam film and woven fabric, Power seats in front- driver seat with memory feature, Unsplit rear seat bench- split folding backrest- with center armrest, Storage box with cover in luggage compartment side panel (covers on both sides) plus cargoelement, 3-point seat belts in front- with tensioner and height adjustment, Without roof rails/roof load rack, Three rear head restraints, Luggage compartment cover- folding, Additional interior noise suppression, Without load-through hatch, Without roll-up sunshade, 3-point seat belts- outer rear with ECE label, Heated front seats, Emission standard EU6 AP, Without seat ventilation/massage seat, Tailgate/trunk lid release, Heat-reflecting windshield, Power-operated child safety lock, "KESSY FULL" without "SAFE" system, Side and rear windows in heat-insulatingglass, Breakaway interior rearview mirror- auto-dimming, Driver knee airbag, Front passenger seat control, Side airbag in front with curtain airbag, Chrom trimming around side windows, Without special body measures, Carrier frequency 433.92 MHz-434.42 Mhz, Without rear spoiler, Transport protection film with additional transport protection measures, Right exterior mirror- convex, Left exterior mirror- convex, Decor moulding Argenzo Zebrano with chrom and ambient lighting, Sun visor with make-up mirror and LED illumination and airbagschild, Front head restraints, Without fire extinguisher, Center armrest in front, Exterior mirror housings and various add-on parts in body color, Without lane keeping system, Radiator grille with chrome molding, Forward collision warning incl. autonomous emergency braking- for adaptive cruise control "high", Without tie down straps/net/pocket, Unsplit molded headliner, Without mud flap, Gearshift knob/handle in leather, Interior light in footwell in front and rear, Ext. mirrors with memory feature- auto- dimming on driver's side- el.folding/ adjustable- separately heated, Electronic immobilizer, 12-volt socket(s), Without heat accumulator/auxiliary heater, Tire pressure monitoring system, Start-stop system with regenerative braking, Decorative door sills front and rear, Power-adjustable lumbar support in frontseats, Without CD/DVD for navigation, Radio Bolero, Standard engine starter, Without extended safety system, PDC with "MANOEUVRE ASSIST" - parking sensors front & rear with aut. braking, Without lane change assist, Vehicle class differentiation -3V0-, Optional infotainment system (MIB3), Without second battery, Alternator 140 A, High-beam control, Low LED Basic headlamps + LED Daylight, "LIGHT ASSISTANT" ("COMMING HOME"- "LEAVING HOME"- "TUNNEL LIGHT"- "DAY LIGHT"), Without rear window wiper and washer system, Windshield wiper intermittent control with light/rain sensor, Key for locking system with remote control, Headlight range control, 8 speakers (passive), LED taillights, Rear fog lamp, Adaptive cruise control (with "follow-to-stop") and speed limiter, Front fog lamp and cornering lamp, Telescopic headlamps washers, Two-tone horn, Antenna for FM reception only- diversity, Not hot country, Without preparation for two-way radio installation, Without additional malfunction display, Comfort telephony with LTE and wireless charging, Non-smoker's package, Without auxiliary heater/parking heater, Passenger seat-belt warning light (for all passenger), "Virtual Cockpit", Additional warning lights (door area), Heated windscreen washer nozzles, "SMART LINK" (wireless for Apple), Operating voltage 12 V, Equipment options subset for Denmark

PICTURES



Picture viewer: <https://fm.bilsalg.dk/business/picturebrowser?t=full&guid=03590dd3-70fe-41e2-b56e-00f80f7a622d&carid=19846560>

OVERVIEW OF DAMAGES AND SHORTAGES

N°	LOCATION	TYPE	SEVERITY	INSURANCE	NOTES	DAMAGE GROUP
1	R. Rear Quarter Panel	Scratch	C3			
2	R. Rear Door	Dent	C3			
						
3	R. Rear Quarter Panel	Dent	C3			
						

Severity explanation:

C0 = No damage / C1 = Simple preparation / C2 = Minor preparation needed / C3 = Can be smart repaired / C4 = Repair/spray paint / C5 = Need replacement

ELECTRICAL AND MECHANICAL CONDITION

N°	LOCATION	TYPE	NOTES
1	Is the car drivable	Yes	
2	Key	Not working	Den ene nøgle virker ikke