

**VEHICLE DESCRIPTION - Audi A6 Sport Prestige 2.0 55 TFSI e PHEV**



**First registration date:**  
6/2022

**VIN:**  
WAUZZZF24NN049140

**Colour:**  
Black Metallic Normal gloss

**Mileage (km):**  
118.601

**Gear:**  
Automatic (7 Gears)

**Fuel type:**  
Hybrid petrol

**Body type:**  
Estate Wagon

**Number of doors:**  
5

**Drive type:**  
4WD

**Model year:**  
2018-2023

**Engine power:**  
270 kW

**Number of seats:**  
5

**Engine size (cc):**  
1984

**Interior:**

**VEHICLE DETAILS**

**Number of keys:**  
2

**Number of license plates:**  
2

**Registration certificate:**  
Part 1 & 2 present

**Service documentation:**  
No

**Inspection date:**  
03-06-2026

**Last service (year/month):**

**Mileage (km) at last service:**

**SUMMARY OF THE VEHICLE'S CONDITION**

**Is the car in a driveable condition:**  
Yes

**Legal tire tread (minimum 1.6 mm):**  
Yes

## WHEELS

TYPE	SEASON	BRAND	POSITION	RIM	SIZE	TREAD
Fitted	Summer tires		Front Left	Alloy rim	19"	6 mm
Fitted	Summer tires		Rear Right	Alloy rim	19"	6 mm
Fitted	Summer tires		Rear Left	Alloy rim	19"	6 mm
Fitted	Summer tires		Front Right	Alloy rim	19"	6 mm

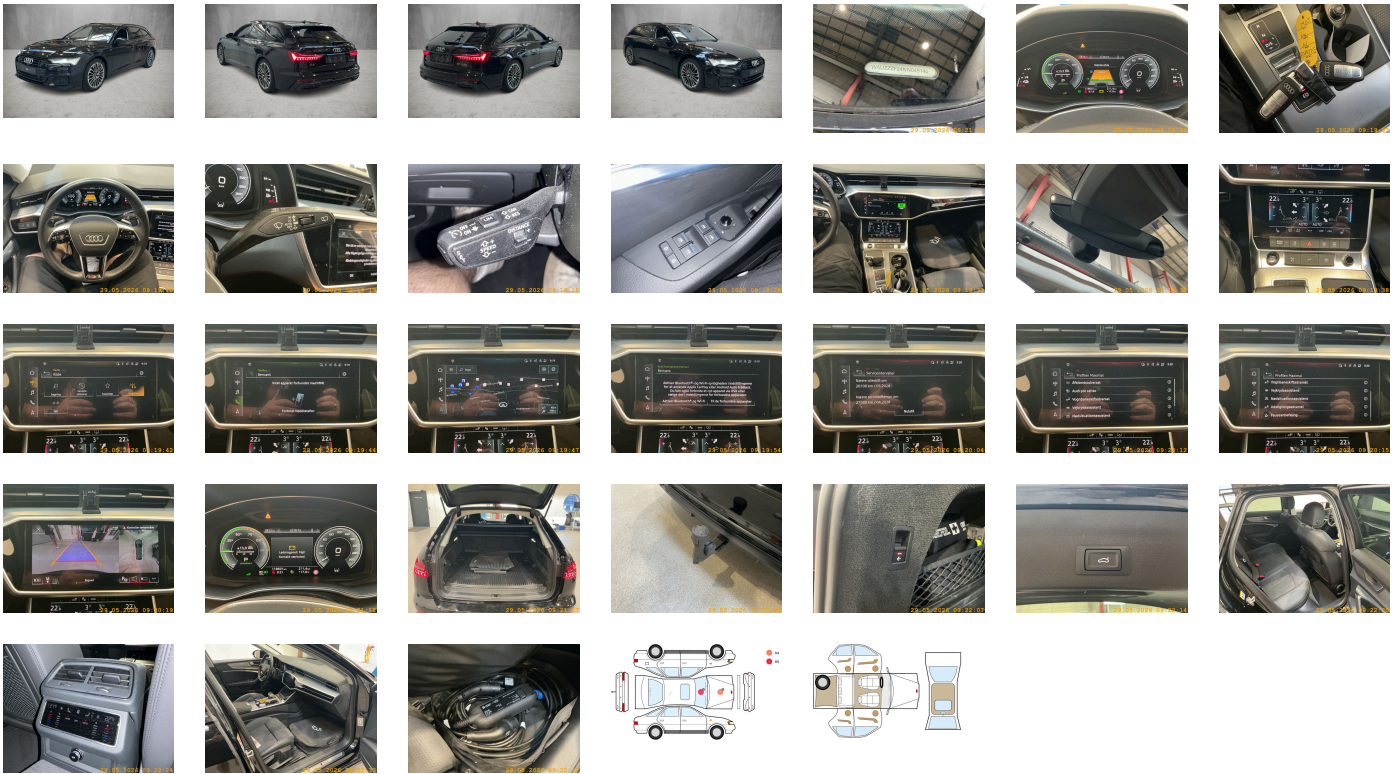
### Legal tire tread (minimum 1.6 mm):

Yes

## ACCESSORIES





Trailer hitch aftermarket equipment- mechanically swiveling- manual, Standard-production quality, Driving on the right, No self-collection, Audi AG, sport, Part set without country-specific prescriptive standard, Type approval country Denmark, Operating permit- alteration, Without noise cancellation, Regional code " ECE " for radio, Charging socket AC type 2, No special edition, Control of series production, Without AdBlue tank, Basic equipment variant, Preparation for functions on demand, Production wheels, Park assist plus, Country group A, N.N.N. Type 1, No special purpose vehicle- standard equipment, Comfort auxiliary air conditioning, Without antenna amplifier, quattro (with ultra technology), Without combined lateral and longitudinal control, Acoustic vehicle alerting system, Vehicles without special upgrade measures, Control buttons- Matt Black, Without Car2X, Manually operated doors, S tronic (for all-wheel drive), Tires 245/45 R19, Audi connect navigation & infotainment, Audi smartphone interface, Audi connect emergency call & service with Audi connect remote & control, SI engine, Top infotainment system Premium (MIB3), Data module- Europe, Intersection assist, Battery 380 A (68 Ah), Surround view cameras, Refrigerant R1234yf, Without head-up display, Wagon/Avant, Left-hand drive, 4-cylinder SI engine 2.0 l/195 kW hybrid- turbo FSI- system output 270kW- base engine T4H, Without wall mount, Transit coating (type 1), Dinamica Frequency microfiber/leather combination with S embossing, Assist package Tour, Assist package City, Assist package Park with park assist plus, HD matrix LED headlights and LED rear lights and headlight cleaning system, Without Storage package, Service indicator 30 000 km or 2 years ( variable ), With multifunction camera, Privacy glass (dark-tinted windows), Interior lighting, Camera-based traffic sign recognition, Digital Audio Broadcasting, Without central control unit, Progressive steering, Sport seats- front, 4-cylinder SI engine 2.0 l unit 06N.E, Audi music interface, Instrument cluster- km/h speedometer, Without garage door opener, Stainless steel pedals and footrest, Standard electric, Extended pedestrian protection, Door sill trims with aluminum inlays- front and rear- illuminated- front with S logo, Tires without specification of tire brand, Wheels- multi-spoke- Graphite Gray- gloss turned finish- 8.5j x 19- 245/45 R19 tires, Equipment package for Denmark, Internal control code, Internal control code, Internal control code, Internal control code, Standard manufacturing sequence, Weight category front axle weight range 11, Hybrid propulsion system PHEV, With special labels safety certificates for Denmark, Fuel tank, S line logo- exterior, Without all-wheel steering, Standard exhaust system, Without ignition/starter switch locking system- without steering lock, Floor mats- front and rear, Manual in Danish, Weight range 12 installation control only- no requirement forecast, Standard climatic zones, Fuel system for SI engine with direct injection (FSI), Sport suspension, Special identification label (EU), Tire repair kit, Seat occupancy sensor, Standard wheel bolts, Standard suspension, Without additional front underbody guard, Vehicle tool kit, Vehicle class differentiation-4K0/4KA-, First-aid kit with warning triangle and high-visibility vests, Installation parts for four-cylinder engine, Leather steering wheel- 3-spoke with multifunction and shift paddles, quattro, Disk brakes- front- 18-inch- brake calipers painted Red (ECE), Increase in initial standard fuel filling, Safety steering column, Disc brakes in rear- 17-inch- brake calipers painted in Red (ECE), Without locking and starting systems, Audi drive select, Labels in English and German, Bumpers- S line, Without Air Quality package, Without additional tires, Model name as per new output designation, Electric motor (hybrid electric vehicle)- total system output 270 kW- unit 0ED.D/0EE.A, ISOFIX child seat mounting and top tether for the outer rear seats, Without partition, Without roof insert (standard roof), Loading floor, ISOFIX child seat mounting for the front passenger seat, Without leather parts scope, Front seats- manually adjustable, Passenger car design, Folding rear bench seat (rear seats: 2+1-seater), Roof rails in Black, Without roll-up sunshade, Seat heating- front, Emission standard EU6 AP, Without seat ventilation/massage seat, Luggage compartment lid- electrically opening and closing, Windshield with heat-reflecting glass, Remote control key- without Safelock, Rear and side windows with heat-insulating glazing, Interior mirror- automatically dimming- frameless, Driver and front passenger airbag with front passenger airbag deactivation, Without front passenger seat control, Side airbags- front and head airbag system, Black Styling package, Without special body measures, Carrier frequency 433.92 MHz-434.42 Mhz, Body-colored rear spoiler, Adhesive film, Without front spoiler, Exterior mirrors on the right- (large field of view)- convex, Left exterior mirror- aspherical, Inlays- Matt Brushed Aluminum- Dark, Sun visor on driver and front passenger side, Head restraints- front, Without fire extinguisher, Without additional side body covers (stone guard), Comfort center armrest- front, Exterior mirror housings in body color, Emblems, Adaptive cruise assist with emergency assist, Audi pre sense front, Headlining in cloth in specific color, Dashboard and door trim panel one-piece- single color, Rear trim panel (ECE), Front license plate carrier, Exterior mirrors- electrically adjustable- heated and folding- automatically dimming on both sides, Speed limiter, Electronic immobilizer, Without CD changer/CD player, Without heat accumulator/auxiliary heater, Gearshift/selector lever handle, Without preparation for VTS (vehicle tracking system), Without leather, Tire pressure loss indicator, Start-stop system, 4-way lumbar support for the front seats, MMI navigation plus with MMI touch response, Audi pre sense rear, Park assist with parking system plus, Side assist with exit warning and rear cross-traffic assist, Household plug type K (Denmark) for the e-tron charging system, Industrial connector CEE 16A- 230V- long and straight- for the e-tron charging system, Charging cable for public charging- mode 3- 11 kW (AC), Without alternator, HD matrix LED headlights with dynamic light sequencing and dynamic turn signal, LED headlights, Separate daytime running light, LED rear lights with dynamic light sequencing and dynamic turn signal, Adaptive cruise control with speed limiter- efficiency- swerve and turn assist, Headlight cleaning system, Two-tone horn, Not hot country, 4-zone deluxe automatic air conditioning, Without integrated toll system, Non-smoker version, Without auxiliary heater/parking heater, Adaptive windshield wipers with integrated washer jets, Without night vision, Audi virtual cockpit, Without additional warning lights, Bang & Olufsen premium sound system with 3D sound, Without "Multimedia" in vehicle, Bluetooth interface, Equipment options subset for Denmark

**PICTURES**



**Picture viewer:** <https://fm.bilsalg.dk/business/picturebrowser?t=full&guid=e5998b7b-4241-41d4-afe0-dc8038020e9a&carid=19186332>

## OVERVIEW OF DAMAGES AND SHORTAGES

N°	LOCATION	TYPE	SEVERITY	INSURANCE	NOTES	DAMAGE GROUP
1	Front Windscreen	Rep Defect	C5		Reporting needed	
						
2	Hood	Stone Chips	C3			
						

Severity explanation:

C0 = No damage / C1 = Simple preparation / C2 = Minor preparation needed / C3 = Can be smart repaired / C4 = Repair/spray paint / C5 = Need replacement

## ELECTRICAL AND MECHANICAL CONDITION

N°	LOCATION	TYPE	NOTES
1	Is the car drivable	Yes	
2	Combined instrument	Defect	Skriver fejl på ledningsnet.